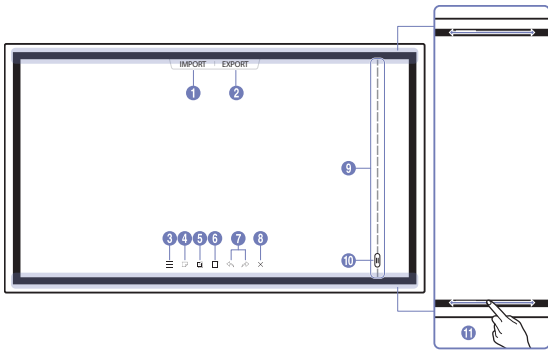


Screen Elements

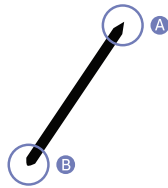


Buttons	Description
1 IMPORT	View the screen of a mobile device or PC connected to the product, or import data such as images from a connected USB or network drive.
2 EXPORT	Share your creations in various ways.
3 ☰	Manage and change the rolls and settings.
4 📄	Move or edit the created rolls for each page.
5 📄	Create a layer to write or draw on over the screen which can also be saved the captured image.
6 📄	Select and edit / capture / email / print the pen or brush content.
7 ↶ / ↷	Undo or redo the last action. • If any page editing actions such as page adding, deleting, and moving are found, ↶ / ↷ is reset. * ↶ / ↷ can be performed up to 20 times for each individual.
8 ✕	Close the current roll and create a new roll.
9 Page breaking line	See page lines.
10 📄	Scroll through pages.
11 Bezel Scroll	Scroll the black area to move the pages.

Drawing

You can freely use the supplied pen to write anything you want.

- Thin Tip (A): Pen Type
- Thick Tip (B): Highlighter Type



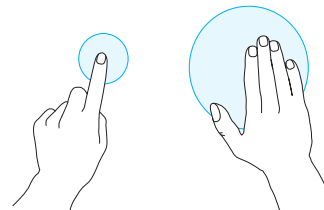
Changing the pen thickness and color

You can change the pen color by touching and holding the screen with the pen.

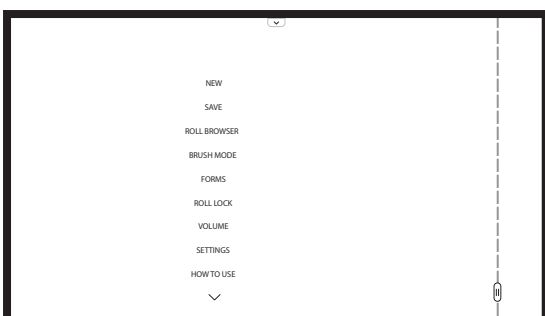
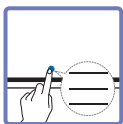


Erasing

You can use your finger or palm to erase your writing.



Managing Rolls

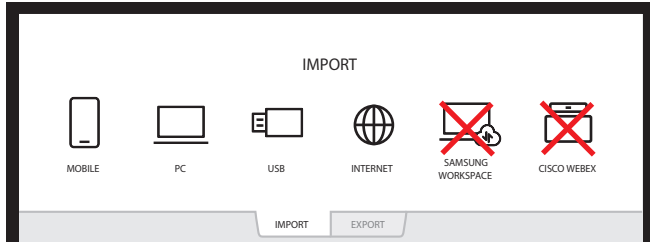


Buttons	Description
NEW	Create a new roll.
SAVE	Save the current roll.
ROLL BROWSER	Open, delete or export saved rolls.
PEN MODE / BRUSH MODE	Choose a mode.
FORMS	Change the background format. * This menu is only visible in PEN MODE mode.
ROLL LOCK / UNLOCK	• ROLL LOCK : Press a six-digit password to lock the current roll. • UNLOCK : To unlock a locked roll, press the six-digit password you set when locking the roll. * Once unlocked, the current roll remains unlocked until it is locked again.
VOLUME	Adjust the volume.
SETTINGS	You can see the configuration menu.
HOW TO USE	You can view How To Use.

Import content from devices or internet

You can view the screen of a mobile device or PC connected to the product, or import data such as images from a connected USB or network drive.

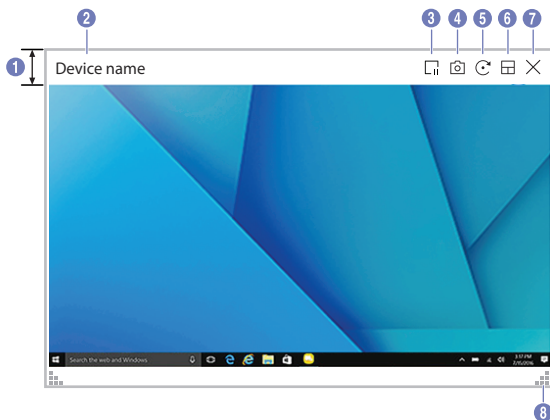
- Touch **IMPORT** at the top of the screen to select the desired device.



Icons	Description
	Displays the screen from a mobile device by using Smart View or Screen Mirroring function.
	Displays your PC screen imported using HDMI, DP (Supported models: WM85R), OPS (Supported models: WM85R) connection or Wireless Display.
	Import videos, images, native FLIP files, or document files from a USB device.
	Connect the network to access the Internet from the product like accessing the Internet from a computer.
	Access to remote PC and your work resources with this function.
	When you connect CISCO WebEx Room Kit Mini for the first time, select IMPORT PC HDMI to generate the icon. When you tap the icon, it is switched to CISCO WebEx mode.

- * The native FLIP format (.iwb) refers to files that are directly saved from the device and only supported by FLIP devices.
- * Supported video file formats: avi, mkv, asf, wmv, mp4, mov, 3gp, vro, mpg, mpeg, ts, tp, trp, flv, vob, svi, m2ts, mts, .webm, .rmvb
- * Supportable image file formats: JPG, BMP, PNG, MPO
- * Supported document file formats: DOC, PPT, PDF, XLS, XLSX

Source Window



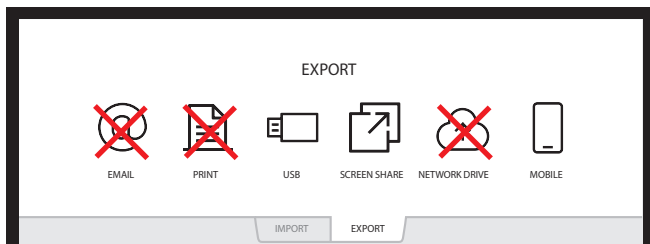
* Available functions may differ depending on the PIP setting.

When you connect a PC or a mobile device to the product, the source window appears.

Parts	Description
	Drag the source window to move to the desired position.
	Displays the name of the connected device.
	Pause the input screen display.
	Capture the source window. * This feature is not available when PIP Capture is set to Off .
	Rotate the source window. * This function is supported only on Android 8.0 Oreo version or later of Samsung mobile devices.
	Change the input screen position or view it on full screen. * When the product is in portrait orientation, the full screen mode is supported only on the Android 8.0 Oreo version or later of Samsung mobile devices. * The icon images are for position reference only. The size of the screen may differ from what is shown.
	Close the viewer.
	Adjust the size of the source window.

Export content to devices

You can export your created rolls in various ways.



Icons	Description
	Send your created rolls via email.
	Print your created rolls.
	Export your created rolls to a connected USB device.
	Share your screen with selected devices.
	Export your created rolls to a registered and connected network drive.
	Send the roll to a mobile device.

How to connect to the Samsung Flip
directly from your Microsoft computer
or Android mobile phone

